

---

# UviTec™

Advancing the management of water





—  
**ABB is a world-leader in measurement solutions and water analysis. Now, following the acquisition of Real Tech, we can measure an even wider range of water parameters.**

**Introducing the UviTec™ product family - the most comprehensive optical-based water quality monitoring platform available, that delivers a whole new world of detection possibilities in water and wastewater.**

**For example, the UviTec™ BOD/COD analyzer delivers accurate results in 5 seconds, instead of 5 days like traditional lab-based methods - saving time and money while improving safety and sustainability.**

**In addition, our Liquid Ai™ software platform empowers our users like never before with greater control and customization of measurements for more complex analysis.**

**UviTec™ combines the power of UV, visible light and digitalization to help customers know what's in their water quicker than ever before and take control. Customers can then detect unforeseen events and react immediately - just what the world needs for our precious resource.**

**UviTec™ measures:**

<b>Benzene</b>	<b>Hydrocarbons</b>	<b>Surfactants</b>
<b>BOD</b>	<b>Monochloramine</b>	<b>TOC</b>
<b>Chromium VI</b>	<b>Nitrate</b>	<b>TSS</b>
<b>COD</b>	<b>Nitrite</b>	<b>Turbidity</b>
<b>Color</b>	<b>Permanganate</b>	<b>UVT</b>
<b>DOC</b>	<b>Spectral Fingerprint</b>	<b>UV254</b>

# Introducing the UviTec™ family

UviTec is the new family name for ABB's range of water analysis solutions based on Ultraviolet (UV) and Visible absorption spectrophotometry and fluorescence technology.

Many water quality parameters and compounds absorb within the UV and visible wavelengths, including organic compounds, nitrate, nitrite, chromium VI, color, permanganate, benzene, UV254 and so much more.

UviTec's patented technology is incorporated into a family of products that provide real-time up-to-the-minute insights for a wide range of parameters and compounds that traditionally could only be performed within a laboratory.

ABB's UviTec family opens up a whole new world of detection possibilities in water and wastewater that are practical, accurate and affordable.

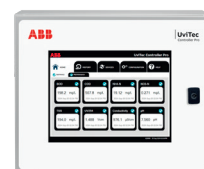
## Meters

UviTec's field meters allow for simple and affordable measurements - anywhere, anytime. Operation is straight forward with accurate and repeatable results obtained in seconds.



## Controllers

Easy access to your water quality data from your sensors using one of our plug-and-play controllers. UviTec controllers offer different operator interfaces with a variety of I/O options.



## Sensors

UviTec sensor options include direct measurement, bypass and multi-parameter sensors, for many important water quality parameters and compounds.



## Accessories

Select from several different sample conditioning and cleaning options to improve performance and lower maintenance.



## Analyzers

UviTec analyzers feature an integral display for practical, affordable measurement. Up-to-the-minute insights from our continuous analyzers can bring significant benefits to many applications.



## Data Services

Add on our Liquid Ai data services allowing for unmatched accuracy, detection capabilities and reliability. Includes both PC-based and remote monitoring tools and solutions.





# Liquid Ai™

Our new Liquid Ai platform is a suite of services to bring intelligent insights to your water quality monitoring applications.

The Liquid Ai platform can provide 3 fundamental services:



### Remote monitoring

Secure, web-based platform and IoT enabled device provides access to water quality data anywhere, anytime.



### Calibration health

On-going calibration monitoring service brings the highest level of reliability, accuracy and confidence to results.



### Anomaly detection

Add-on to calibration monitoring, enables detection and alert of composition changes in water.

### Benefits of remote monitoring

Gain access to your data through a channel that best fits your needs. We provide multiple data access and communication options including our web-based remote monitoring platform, text and email alerts as well as in-plant communication from your UviTec controller, SCADA or PLC.

### Benefits of calibration health

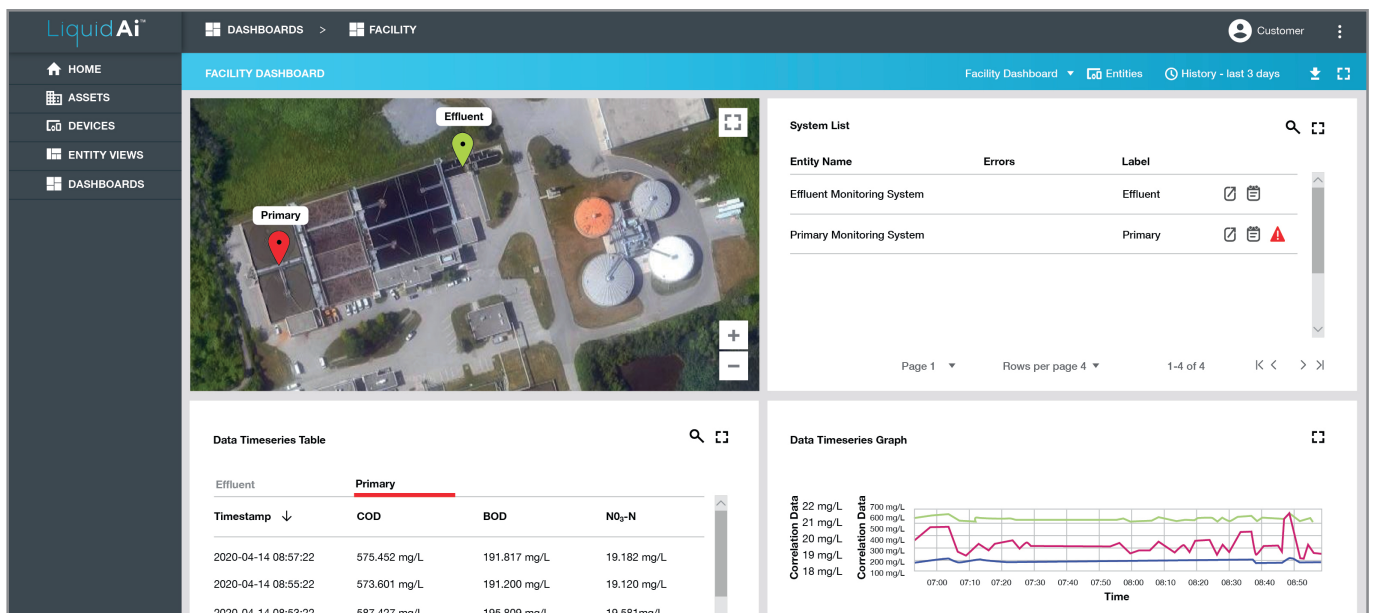
Our Liquid Ai calibration service provide you with the highest level of confidence and trust in your water quality results. Unlike global calibrations that lose relevancy over time, our custom calibrations become more robust as we continue to learn your water. The longer your UviTec system is installed, the smarter it becomes with Liquid Ai service.

### Benefits of anomaly detection

This service provides invaluable insights for plant operations improving real-time intelligence for better decision making.

### Data management PC software

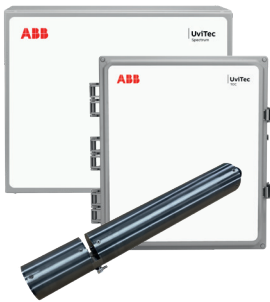
Empowering operators with our innovative automatic data model builder tool allowing users to create custom site specific calibrations increasing confidence in results.





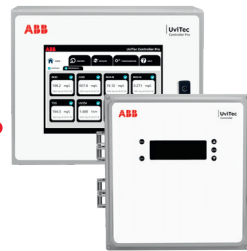
# Easily build the configuration that's right for you

UviTec's modular platform allows you to build the right solution for your needs and budget.



## Step 1: Select your sensors

Select from a wide array of real-time water quality monitoring sensors to ensure you can gain up to the minute insights on the parameters and compounds that are most important to you.



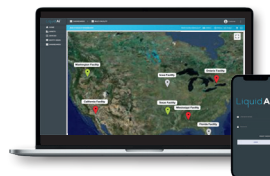
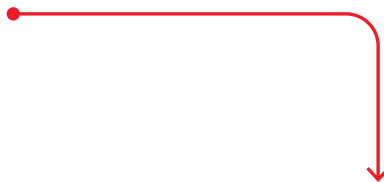
## Step 2: Choose your controller

Choose from two controller options offering a two different operator interfaces with variety of I/O options.



## Step 3: Add on accessories

Select from several different sample conditioning, and cleaning options to improve performance and lower maintenance.

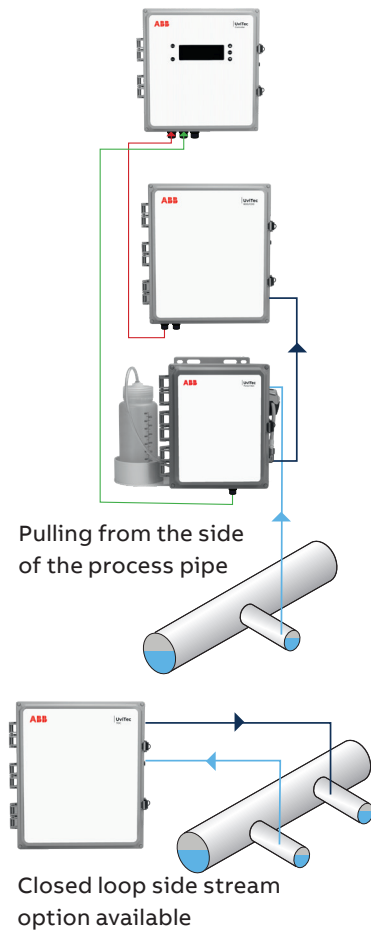


## Step 4: Complete with Liquid Ai services

Add on our Liquid Ai data services including remote monitoring and calibration update services to bring valuable insights to your data.

# Configuration examples

## Pressurized water conditions



### Controller

- UviTec Controller (upgrade to Pro\* version available)

### Sensor form factor

- UviTec Bypass sensors

### Accessories

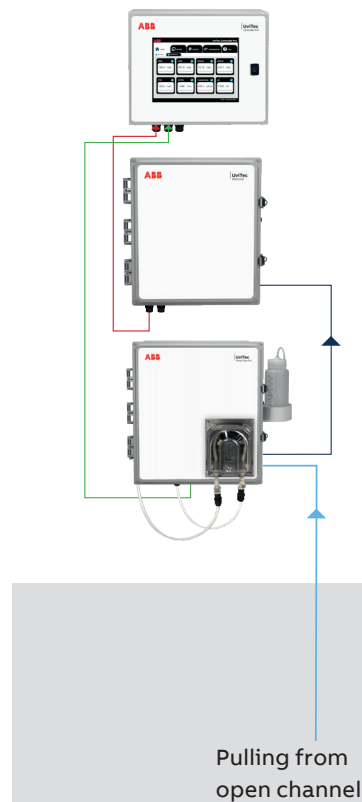
- UviTec Clean

### Add-on options\*

- Dual Feed (used to monitor two sample streams or used for intermittent flow installations, note this requires clean water at monitoring location)
- Liquid Ai Data Services

\*Not shown in illustration

## Open-channel /non-pressurized water conditions



### Controller

- UviTec Controller (upgraded pro version shown)

### Sensor form factor

- UviTec Bypass sensors

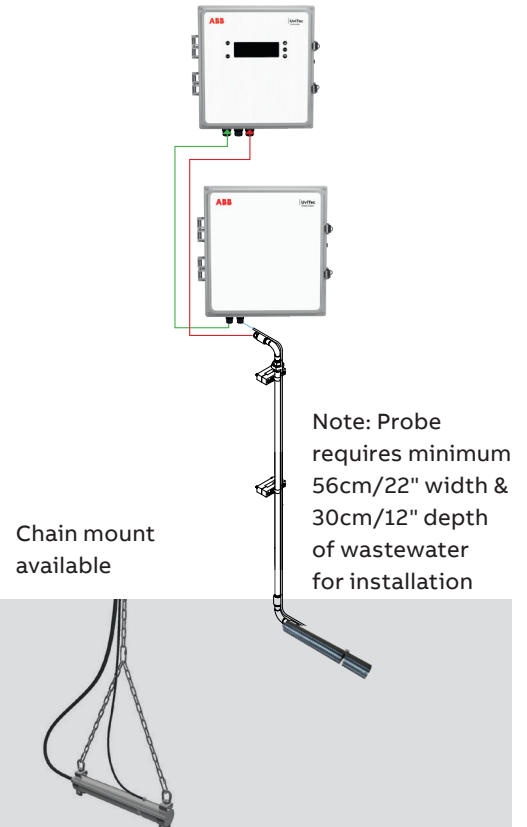
### Accessories

- UviTec Pump Clean Pro (high solids) or
- UviTec Pump Clean\* (for low solids)

### Add-on options\*

- Compressed Air System (when no compressor air is onsite)
- Liquid Ai Data Services

## Open-channel /non-pressurized water conditions



### Controller

- UviTec Controller (upgrade to Pro\* version available)

### Sensor form factor

- UviTec Bypass sensors

### Accessories

- UviTecProbe Clean

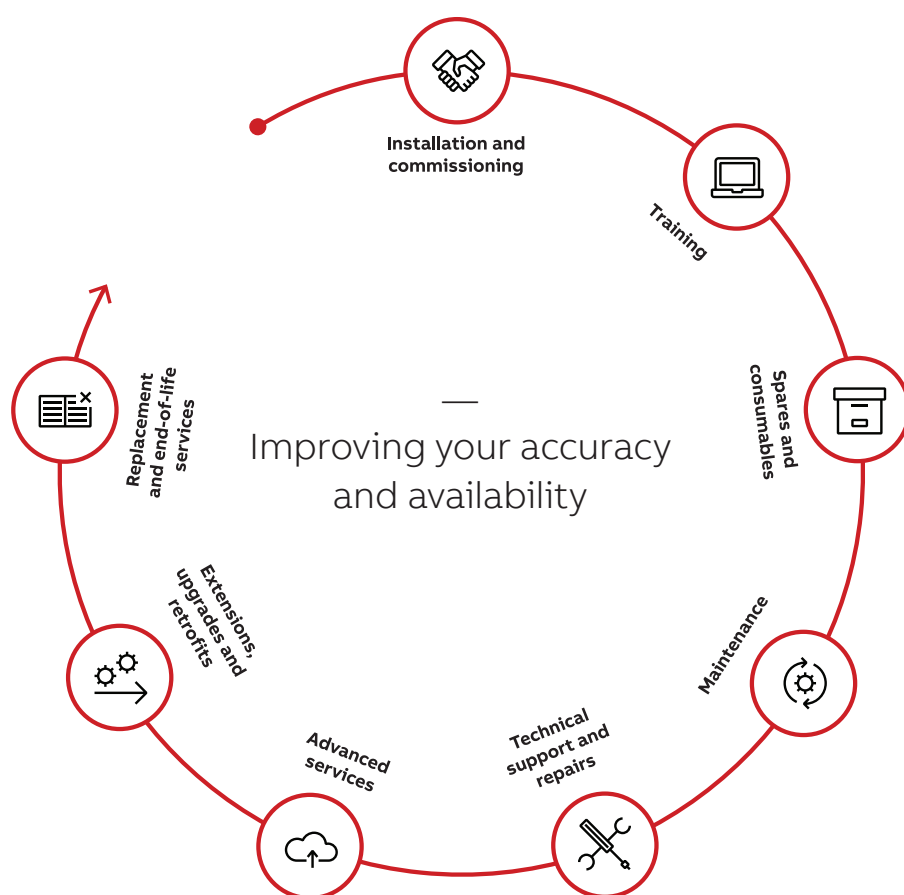
### Add-on options\*

- Compressed Air System (when no compressor air is onsite)
- Liquid Ai Data Services

## Measurement solutions for the water industry

ABB Measurement & Analytics supplies instrumentation and analytical solutions for the complete water-cycle. With over 100 years' of innovation and domain expertise, our water portfolio is designed to be easily configurable and integrated, to handle the unique demands of the industry, driving highest levels of efficiency, reliability and sustainability.

Our impressive offering comprises of continuous water analyzers, field instrumentation devices, actuators, flow measurement devices, controllers, and a suite of digital asset performance management tools as well as product lifecycle support.



When you purchase an ABB measurement device, you don't just get a product. You gain access to a trusted and respected authority on industrial automation, operational excellence and digital technologies.

ABB has defined services for every lifecycle stage to make sure you receive the maximum possible benefit from your purchase today, tomorrow and beyond.

Learn more at [solutions.abb/uvitec](https://solutions.abb/uvitec)





**Winn-Marion  
Companies**

—

**Winn-Marion**  
**7151 S Blackhawk St, Suite 900**  
Centennial, Colorado 80112

T: 303.778.6767

<https://winn-marion.com>